



Time to Reforest – Now What?

When the reforestation process starts, most landowners know the amount of land they own, and they want to plant the most productive seedlings available. With new options and genetics available today, both site preparation and seedling selection are two key factors where it pays to talk to a Reforestation Advisor (RA) to make sure you are getting the most value for your investment.

In talking to landowners, the first question RAs always ask is, “What do you desire at the harvest of your trees?” At that point, we begin to ask a landowner about the site they want to plant. Some basic questions that have to be addressed immediately, such as:

- What type of soil is in the planting site – Sand, Silt or Clay?
- What is the soil pH?
- What nutrients do you have in the soil?

After investing both money and time in site preparation, it is essential that landowners must do their homework to determine the best seedlings for their goals. Let's look at pine seedlings. As breeding and technology have advanced, landowners continuously have new options available to them.

Following rigorous progeny testing, Open Pollinated, Mass Control Pollinated (MCP®), and Varietal seedlings are now available to the public.



In addition, landowners have classifications within each of those types. The rankings with the classifications are influenced by:

- Height
- Volume
- Straightness in regards to form
- Disease resistance
- Forking probability

ArborGen can provide clear performance data of all traits to customers supported by university co-ops and internal trial data. By asking the right questions, we are able to use our knowledge of forestry and genetics to partner with a landowner to help establish a stand of trees that has the highest probability of reaching their goals.

[Find Your Reforestation Advisor](#)

Bringing the Trees to You Video Series



Watch the next video in our series of 360° tours in the field and see for yourself how elite genetics seedlings grow into disease-resistant, straight, and fast-growing trees. Note: This video is of very high resolution so please consider using hi-speed broadband. When viewing on mobile devices, the viewpoint can change with the movement of your device to look around. When viewing on a computer, simply move your cursor around in the video to control the view. Click the Gear icon next to the YouTube logo to adjust the resolution of this video.

[Learn More](#)

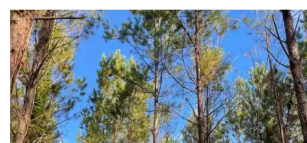
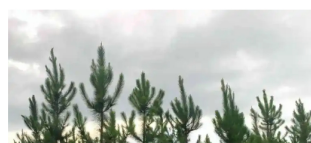
Customer Success Story: Steve Templin



Certified Forester Steve Templin speaks on how he has trusted ArborGen to be his seedling provider for his clients due to having the best quality seedlings. Templin Forestry Inc. has over 40 years of experience in forest management and knows how to put forth the effort to be excellent at doing things right.

[Learn More](#)

Client Results





25' OP at 4.5 years
Bay County, FL

OP at 4.5 years
Bay County, FL



70' MCP at 12 years
Williamsburg County, SC

MCP at 12 years
Williamsburg County, SC

[See More Client Results](#)

[Click here for the previous editions of TreeLines.](#)



Download a Copy of this TreeLines Edition

Need a trusted partner to guide the way? Get in touch with a Reforestation Advisor to explore your options!



Paul Jeffreys, Ph.D.
Alabama & Northern Mississippi
Manager Special Projects & Sustainability
205-712-9582

[See More About Paul](#)



Austin Heine
North Carolina & Virginia
910-660-3209

[See More About Austin](#)



Blake Sherry
Florida, Southern Georgia, & Southern
Alabama
912-433-5407

[See More About Blake](#)



Drew Fasano
South Carolina & Northern Georgia
843-520-6865

[See More About Drew](#)



Jeff Slaga
Arkansas, Louisiana, Oklahoma & Texas
936-212-1029

[See More About Jeff](#)



Kylie Burdette
U.S. Sales Manager
864-650-4454

[See More About Kylie](#)



Jason Watson
Director, U.S. Sales
404-840-7489

[See More About Jason](#)

FIND AN ADVISOR OR NURSERY



- Blenheim, SC Nursery
- Bellville, GA Nursery
- Shellman, GA Nursery
- Selma, AL Nursery
- Bluff City, AR Nursery
- Bullard, TX Nursery
- Livingston, TX Distribution Point
- Jasper, TX Nursery

GET IN TOUCH

2011 Broadbank Court
Ridgeville, S.C. 29472

888.888.7158

info@arborgen.com



[Request Catalog](#)

QUICK LINKS

- Find a Reforestation Advisor
- ArborGen TreeLines - News & Updates
- Join Our Team
- Helpful Resources
- About ArborGen
- In the News
- Press Releases
- Search Website

[Get TreeLines](#)

FIND AN ADVISOR OR NURSERY



GET IN TOUCH

408 Brighton Park Blvd., Ste 101
Summerville, SC 29486

888.888.7158

info@arborgen.com

QUICK LINKS

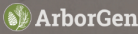
Find a Reforestation Advisor.
TreeLines - News & Updates
TreeLines Podcast
Join Our Team
Helpful Resources
About ArborGen



[About ArborGen](#)
[ArborGen Brazil](#)
[ArborGen Holdings](#)
[Press Releases](#)
[Client Payment Portal](#)
[Privacy Policy](#)
[Search Website](#)

REQUEST CATALOG

GET TREELINES



- [Blenheim, SC Nursery](#)
- [Bellville, GA Nursery](#)
- [Shellman, GA Nursery](#)
- [Selma, AL Nursery](#)
- [Bluff City, AR Nursery](#)
- [Bullard, TX Nursery](#)
- [Livingston, TX Distribution Point](#)
- [Jasper, TX Nursery](#)
- [Florida](#)
- [Louisiana](#)
- [Mississippi](#)
- [North Carolina](#)
- [Oklahoma](#)
- [Virginia](#)